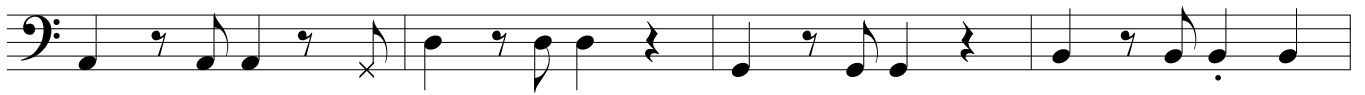


D

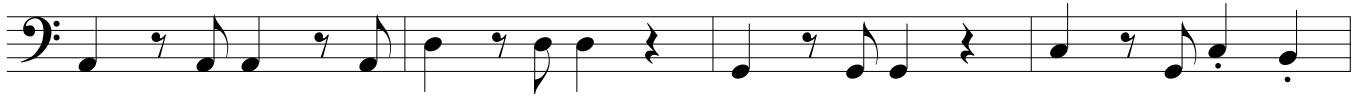
41



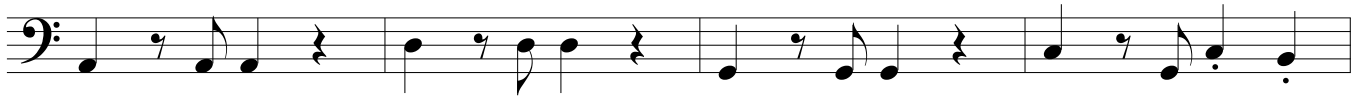
45

**E**

53



57



61

**F**

69



G

Musical staff G, measures 71-76. Bass clef, 4/4 time signature. The staff contains six measures of music. Measures 71-74 are identical: quarter note G2, quarter note A2, quarter note B2, quarter rest. Measure 75: quarter note G2, quarter note A2, quarter note B2, quarter rest. Measure 76: quarter note G2, quarter note A2, quarter note B2, quarter note G2.

77

Musical staff G, measures 77-80. Bass clef, 4/4 time signature. Measures 77-79 are identical to measures 71-76. Measure 80: quarter note G2, quarter note A2, quarter note B2, quarter note G2. The staff ends with a double bar line.

H

Musical staff H, measures 81-84. Bass clef, 4/4 time signature. The staff contains four measures of music, identical to measures 71-76 of staff G.

85

Musical staff H, measures 85-88. Bass clef, 4/4 time signature. The staff contains four measures of music, identical to measures 71-76 of staff G.

I

Musical staff I, measures 89-92. Bass clef, 4/4 time signature. The staff contains four measures of music, identical to measures 71-76 of staff G.

93

Musical staff I, measures 93-96. Bass clef, 4/4 time signature. The staff contains four measures of music, identical to measures 71-76 of staff G.

97

Musical staff I, measures 97-100. Bass clef, 4/4 time signature. The staff contains four measures of music, identical to measures 71-76 of staff G.

101

Musical staff I, measures 101-104. Bass clef, 4/4 time signature. The staff contains four measures of music, identical to measures 71-76 of staff G. The staff ends with a double bar line.

J FADE OUT

Musical staff J, measures 105-108. Bass clef, 4/4 time signature. The staff contains four measures of music, identical to measures 71-76 of staff G. The staff ends with a double bar line.