

Uncle Jonny

A

♩ = 88

4

B

C

D

E

22

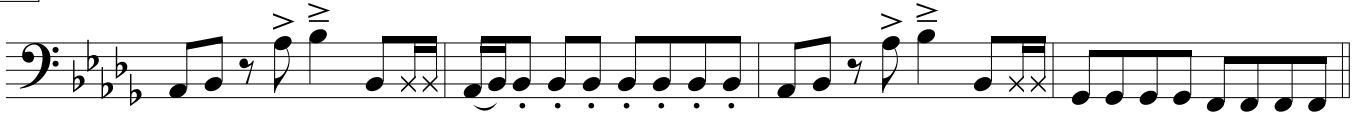
26

30

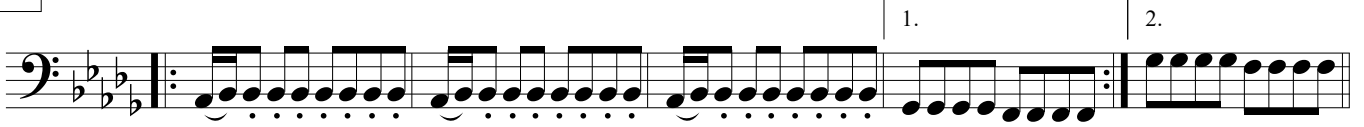
34



F



G



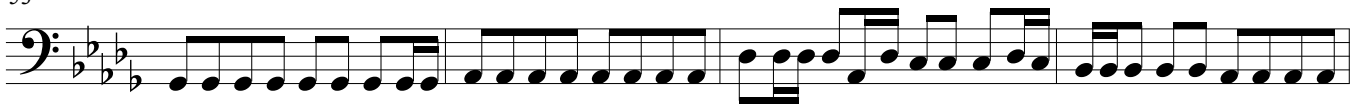
H



49



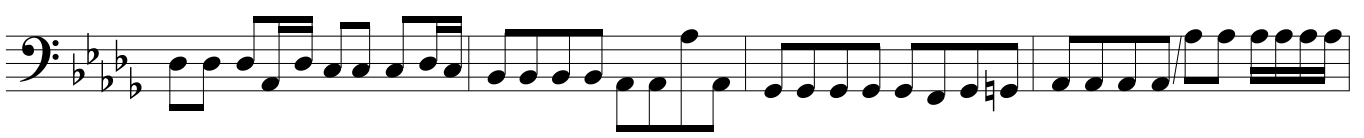
53



57



I



63



J

Musical notation for Uncle Jonny, measures 61-70. The piece is in bass clef with a key signature of three flats (B-flat, E-flat, A-flat). The first measure (61) starts with a repeat sign and contains a quarter note G2, a quarter rest, and a quarter note A2 with an accent (>) and a tenuto mark (≡). The second measure (62) contains a quarter note G2 with an accent (>) and a tenuto mark (≡), followed by a quarter note A2 with an accent (>) and a tenuto mark (≡), and a quarter note B-flat2 with an accent (>) and a tenuto mark (≡). The third measure (63) contains a quarter note G2 with an accent (>) and a tenuto mark (≡), followed by a quarter note A2 with an accent (>) and a tenuto mark (≡), and a quarter note B-flat2 with an accent (>) and a tenuto mark (≡). The fourth measure (64) contains a quarter note G2 with an accent (>) and a tenuto mark (≡), followed by a quarter note A2 with an accent (>) and a tenuto mark (≡), and a quarter note B-flat2 with an accent (>) and a tenuto mark (≡). The fifth measure (65) contains a quarter note G2 with an accent (>) and a tenuto mark (≡), followed by a quarter note A2 with an accent (>) and a tenuto mark (≡), and a quarter note B-flat2 with an accent (>) and a tenuto mark (≡). The sixth measure (66) contains a quarter note G2 with an accent (>) and a tenuto mark (≡), followed by a quarter note A2 with an accent (>) and a tenuto mark (≡), and a quarter note B-flat2 with an accent (>) and a tenuto mark (≡). The seventh measure (67) contains a quarter note G2 with an accent (>) and a tenuto mark (≡), followed by a quarter note A2 with an accent (>) and a tenuto mark (≡), and a quarter note B-flat2 with an accent (>) and a tenuto mark (≡). The eighth measure (68) contains a quarter note G2 with an accent (>) and a tenuto mark (≡), followed by a quarter note A2 with an accent (>) and a tenuto mark (≡), and a quarter note B-flat2 with an accent (>) and a tenuto mark (≡). The ninth measure (69) contains a quarter note G2 with an accent (>) and a tenuto mark (≡), followed by a quarter note A2 with an accent (>) and a tenuto mark (≡), and a quarter note B-flat2 with an accent (>) and a tenuto mark (≡). The tenth measure (70) contains a quarter note G2 with an accent (>) and a tenuto mark (≡), followed by a quarter note A2 with an accent (>) and a tenuto mark (≡), and a quarter note B-flat2 with an accent (>) and a tenuto mark (≡).

71

Musical notation for Uncle Jonny, measures 71-75. The piece is in bass clef with a key signature of three flats (B-flat, E-flat, A-flat). The first measure (71) contains a quarter note G2 with an accent (>) and a tenuto mark (≡), followed by a quarter note A2 with an accent (>) and a tenuto mark (≡), and a quarter note B-flat2 with an accent (>) and a tenuto mark (≡). The second measure (72) contains a quarter note G2 with an accent (>) and a tenuto mark (≡), followed by a quarter note A2 with an accent (>) and a tenuto mark (≡), and a quarter note B-flat2 with an accent (>) and a tenuto mark (≡). The third measure (73) contains a quarter note G2 with an accent (>) and a tenuto mark (≡), followed by a quarter note A2 with an accent (>) and a tenuto mark (≡), and a quarter note B-flat2 with an accent (>) and a tenuto mark (≡). The fourth measure (74) contains a quarter note G2 with an accent (>) and a tenuto mark (≡), followed by a quarter note A2 with an accent (>) and a tenuto mark (≡), and a quarter note B-flat2 with an accent (>) and a tenuto mark (≡). The fifth measure (75) contains a quarter note G2 with an accent (>) and a tenuto mark (≡), followed by a quarter note A2 with an accent (>) and a tenuto mark (≡), and a quarter note B-flat2 with an accent (>) and a tenuto mark (≡).