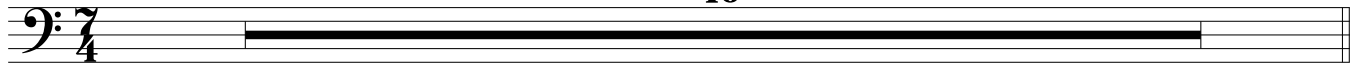
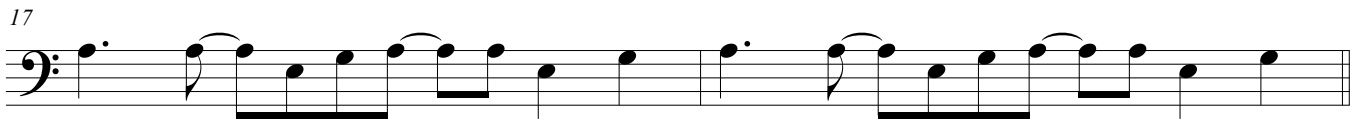
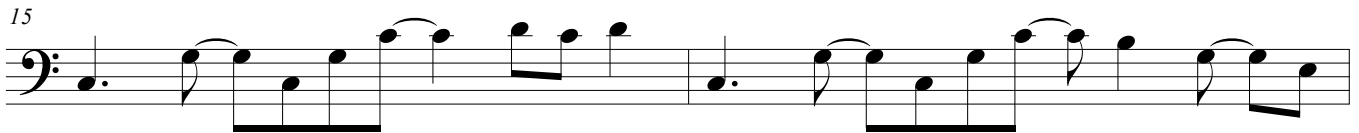
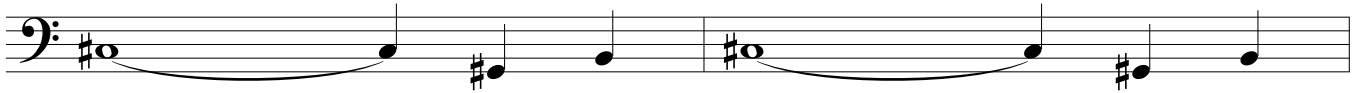


A ♩ = 175

10



B



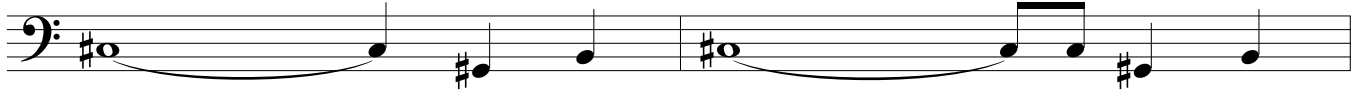
C



25



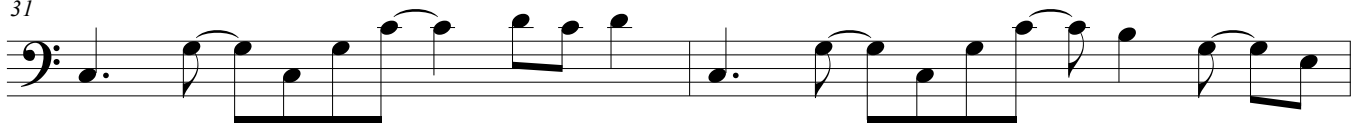
D



29



31



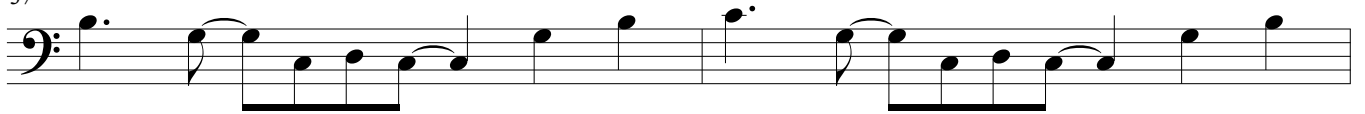
33



E



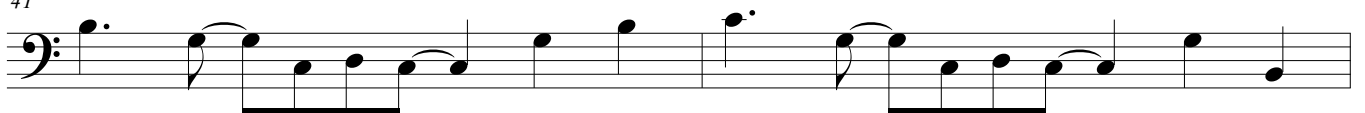
37



39



41



F

First staff of music for section F, measures 1-4. It begins with a bass clef and a key signature of one sharp (F#). The first measure contains a whole note chord (F#2, C3, F#3). The second measure has a half note (F#2) and a quarter note (C3). The third measure has a half note (F#3) and a quarter note (C3). The fourth measure has a half note (F#3) and a quarter note (C3).

45

Second staff of music for section F, measures 45-48. It begins with a bass clef and a key signature of one sharp (F#). The first measure has a quarter note (F#2), an eighth note (C3), and a quarter note (F#3). The second measure has a quarter note (F#3), an eighth note (C3), and a quarter note (F#3). The third measure has a quarter note (F#3), an eighth note (C3), and a quarter note (F#3). The fourth measure has a quarter note (F#3), an eighth note (C3), and a quarter note (F#3).

47

Third staff of music for section F, measures 47-50. It begins with a bass clef and a key signature of one sharp (F#). The first measure has a quarter note (F#2), an eighth note (C3), and a quarter note (F#3). The second measure has a quarter note (F#3), an eighth note (C3), and a quarter note (F#3). The third measure has a quarter note (F#3), an eighth note (C3), and a quarter note (F#3). The fourth measure has a quarter note (F#3), an eighth note (C3), and a quarter note (F#3).

49

Fourth staff of music for section F, measures 49-52. It begins with a bass clef and a key signature of one sharp (F#). The first measure has a quarter note (F#2), an eighth note (C3), and a quarter note (F#3). The second measure has a quarter note (F#3), an eighth note (C3), and a quarter note (F#3). The third measure has a quarter note (F#3), an eighth note (C3), and a quarter note (F#3). The fourth measure has a quarter note (F#3), an eighth note (C3), and a quarter note (F#3).

G

Fifth staff of music for section G, measures 53-56. It begins with a bass clef and a key signature of one sharp (F#). The first measure has a quarter note (F#2), an eighth note (C3), and a quarter note (F#3). The second measure has a quarter note (F#3), an eighth note (C3), and a quarter note (F#3). The third measure has a quarter note (F#3), an eighth note (C3), and a quarter note (F#3). The fourth measure has a quarter note (F#3), an eighth note (C3), and a quarter note (F#3).

H

Sixth staff of music for section H, measures 57-60. It begins with a bass clef and a key signature of one sharp (F#). The first measure has a quarter note (F#2), an eighth note (C3), and a quarter note (F#3). The second measure has a quarter note (F#3), an eighth note (C3), and a quarter note (F#3). The third measure has a quarter note (F#3), an eighth note (C3), and a quarter note (F#3). The fourth measure has a quarter note (F#3), an eighth note (C3), and a quarter note (F#3).

57

Seventh staff of music for section H, measures 57-60. It begins with a bass clef and a key signature of one sharp (F#). The first measure has a quarter note (F#2), an eighth note (C3), and a quarter note (F#3). The second measure has a quarter note (F#3), an eighth note (C3), and a quarter note (F#3). The third measure has a quarter note (F#3), an eighth note (C3), and a quarter note (F#3). The fourth measure has a quarter note (F#3), an eighth note (C3), and a quarter note (F#3).

59

Eighth staff of music for section H, measures 59-62. It begins with a bass clef and a key signature of one sharp (F#). The first measure has a quarter note (F#2), an eighth note (C3), and a quarter note (F#3). The second measure has a quarter note (F#3), an eighth note (C3), and a quarter note (F#3). The third measure has a quarter note (F#3), an eighth note (C3), and a quarter note (F#3). The fourth measure has a quarter note (F#3), an eighth note (C3), and a quarter note (F#3).

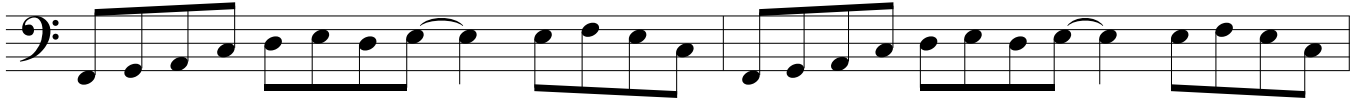
61

Ninth staff of music for section H, measures 61-64. It begins with a bass clef and a key signature of one sharp (F#). The first measure has a quarter note (F#2), an eighth note (C3), and a quarter note (F#3). The second measure has a quarter note (F#3), an eighth note (C3), and a quarter note (F#3). The third measure has a quarter note (F#3), an eighth note (C3), and a quarter note (F#3). The fourth measure has a quarter note (F#3), an eighth note (C3), and a quarter note (F#3).

63



65



67



69



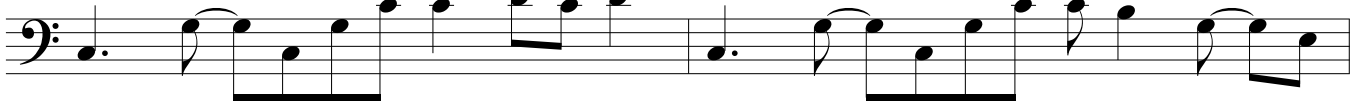
I



73



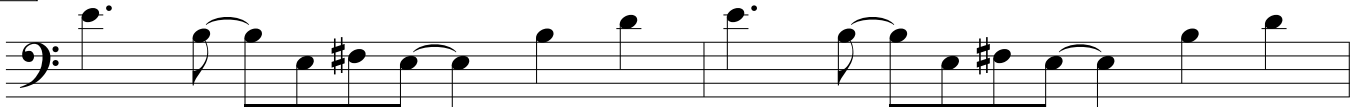
75

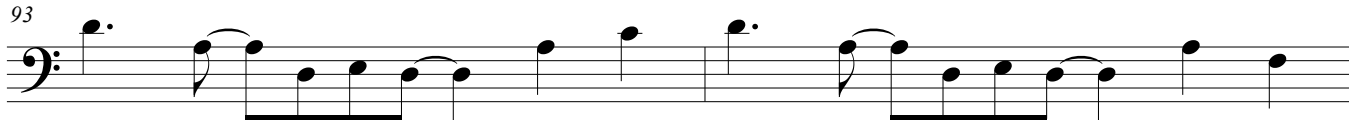


77



J

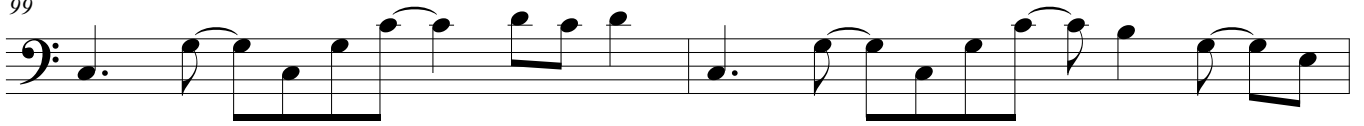




K



99



101



L



105



107



109



111

