

BASSE

# Can't Buy Me Love

The Beatles

Transcription : Julie Gagné

♩ = 175

**A**



4



**B**



11



15



**C**



23



27



**D**

First musical staff for chord D, measures 1-4. The notes are: D2, D2, D2, D2, E2, E2, E2, E2, F#2, F#2, G2, G2, A2, A2, B2, B2.

35

Second musical staff for chord D, measures 5-8. The notes are: D2, D2, D2, D2, E2, E2, E2, E2, F#2, F#2, G2, G2, A2, A2, B2, B2.

**E**

Third musical staff for chord E, measures 9-12. The notes are: D2, D2, E2, E2, F#2, F#2, G2, G2, A2, A2, B2, B2, C#2, C#2, D3, D3.

43

Fourth musical staff for chord E, measures 13-16. The notes are: D2, D2, E2, E2, F#2, F#2, G2, G2, A2, A2, B2, B2, C#2, C#2, D3, D3.

47

Fifth musical staff for chord E, measures 17-20. The notes are: D2, D2, E2, E2, F#2, F#2, G2, G2, A2, A2, B2, B2, C#2, C#2, D3, D3.

**F**

Sixth musical staff for chord F, measures 21-24. The notes are: D2, D2, E2, E2, F#2, F#2, G2, G2, A2, A2, B2, B2, C#2, C#2, D3, D3.

56

Seventh musical staff for chord F, measures 25-28. The notes are: D2, D2, E2, E2, F#2, F#2, G2, G2, A2, A2, B2, B2, C#2, C#2, D3, D3.

60

Eighth musical staff for chord F, measures 29-32. The notes are: D2, D2, E2, E2, F#2, F#2, G2, G2, A2, A2, B2, B2, C#2, C#2, D3, D3.

**G**

Ninth musical staff for chord G, measures 33-36. The notes are: D2, D2, E2, E2, F#2, F#2, G2, G2, A2, A2, B2, B2, C#2, C#2, D3, D3.

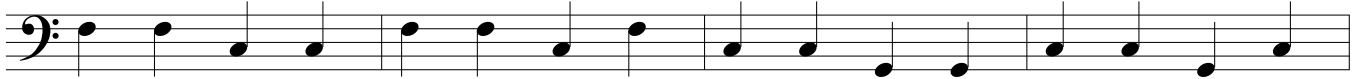
68



H



76



80



I



88

