

Suck My Kiss

A ♩ = 100

Section A, measures 1-3. Bass clef, 4/4 time signature, key of Bb. Measure 1: whole rest. Measure 2: quarter note G2, quarter note F2, quarter note E2, quarter note D2. Measure 3: quarter note C2, quarter note B1, quarter note A1, quarter note G1. Asterisks are placed under the notes in measures 2 and 3.

Section A, measures 4-5. Measure 4: quarter note G2, quarter note F2, quarter note E2, quarter note D2. Measure 5: eighth notes G2, F2, E2, D2, C2, B1, A1, G1. Asterisks are placed under the notes in measure 4.

B

Section B, measures 6-7. Measure 6: quarter note G2, quarter note F2, quarter note E2, quarter note D2. Measure 7: quarter note C2, quarter note B1, quarter note A1, quarter note G1.

C

Section C, measures 8-9. Measure 8: quarter note G2, quarter note F2, quarter note E2, quarter note D2. Measure 9: quarter note C2, quarter note B1, quarter note A1, quarter note G1.

Section C, measures 10-11. Measure 10: quarter note G2, quarter note F2, quarter note E2, quarter note D2. Measure 11: quarter note C2, quarter note B1, quarter note A1, quarter note G1.

Section C, measures 12-14. Measure 12: quarter note G2, quarter note F2, quarter note E2, quarter note D2. Measure 13: quarter note C2, quarter note B1, quarter note A1, quarter note G1. Measure 14: quarter note G2, quarter note F2, quarter note E2, quarter note D2. First and second endings are indicated above measures 13 and 14.

D

Section D, measures 15-18. Measure 15: quarter note G2, quarter note F2, quarter note E2, quarter note D2. Measure 16: quarter note C2, quarter note B1, quarter note A1, quarter note G1. Measure 17: quarter note G2, quarter note F2, quarter note E2, quarter note D2. Measure 18: quarter note C2, quarter note B1, quarter note A1, quarter note G1.

Section D, measures 19-22. Measure 19: quarter note G2, quarter note F2, quarter note E2, quarter note D2. Measure 20: quarter note C2, quarter note B1, quarter note A1, quarter note G1. Measure 21: quarter note G2, quarter note F2, quarter note E2, quarter note D2. Measure 22: quarter note C2, quarter note B1, quarter note A1, quarter note G1.

E

Musical staff for section E, measures 1-28. The staff is in bass clef with a key signature of one flat (B-flat). It contains a sequence of eighth and sixteenth notes with various rests and slurs.

F

Musical staff for section F, measures 1-28. The staff is in bass clef with a key signature of one flat (B-flat). It contains a sequence of eighth and sixteenth notes with various rests and slurs.

29

Musical staff for section F, measures 29-30. The staff is in bass clef with a key signature of one flat (B-flat). It contains a sequence of eighth and sixteenth notes with various rests and slurs.

31

Musical staff for section F, measures 31-33. The staff is in bass clef with a key signature of one flat (B-flat). It features a first ending (marked '1.') and a second ending (marked '2.') with repeat signs.

34

Musical staff for section F, measures 34-35. The staff is in bass clef with a key signature of one flat (B-flat). It contains a sequence of eighth and sixteenth notes with various rests and slurs.

G

Musical staff for section G, measures 1-4. The staff is in bass clef with a key signature of one flat (B-flat). It contains a sequence of eighth and sixteenth notes with various rests and slurs.

40

Musical staff for section G, measures 40-45. The staff is in bass clef with a key signature of one flat (B-flat). It contains a sequence of eighth and sixteenth notes with various rests and slurs.

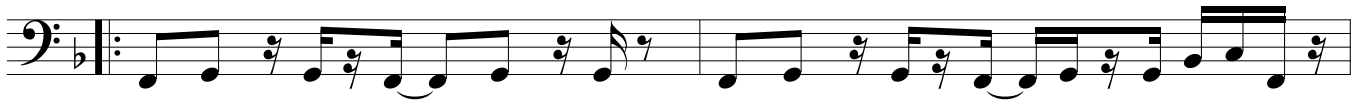
H

Musical staff for section H, measures 1-4. The staff is in bass clef with a key signature of one flat (B-flat). It contains a sequence of eighth and sixteenth notes with various rests and slurs. Asterisks are placed under the final notes of the first and third measures.

46

Musical staff for section H, measures 46-51. The staff is in bass clef with a key signature of one flat (B-flat). It contains a sequence of eighth and sixteenth notes with various rests and slurs. Asterisks are placed under the final notes of the first and second measures.

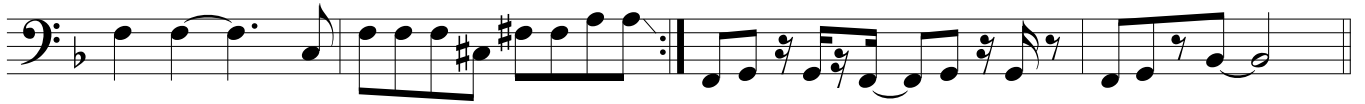
I



50



52



J



60

